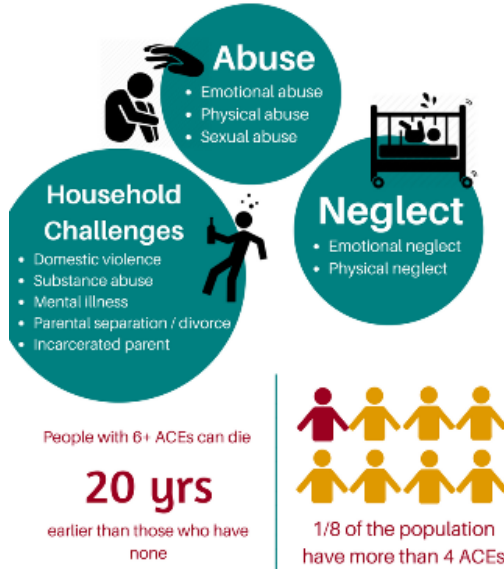


Adverse Childhood Experiences

Traumatic events that can have negative, lasting effects on health and wellbeing



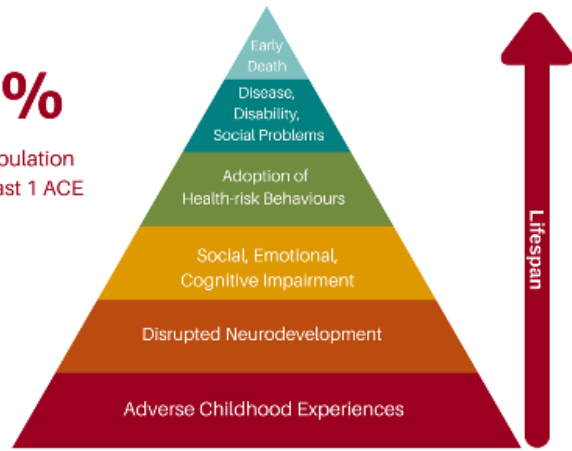
4 or more ACEs

- 3x the levels of lung disease and adult smoking
- 11x the level of intravenous drug abuse
- 14x the number of suicide attempts
- 4x as likely to have begun intercourse by age 15
- 4.5x more likely to develop depression
- 2x the level of liver disease

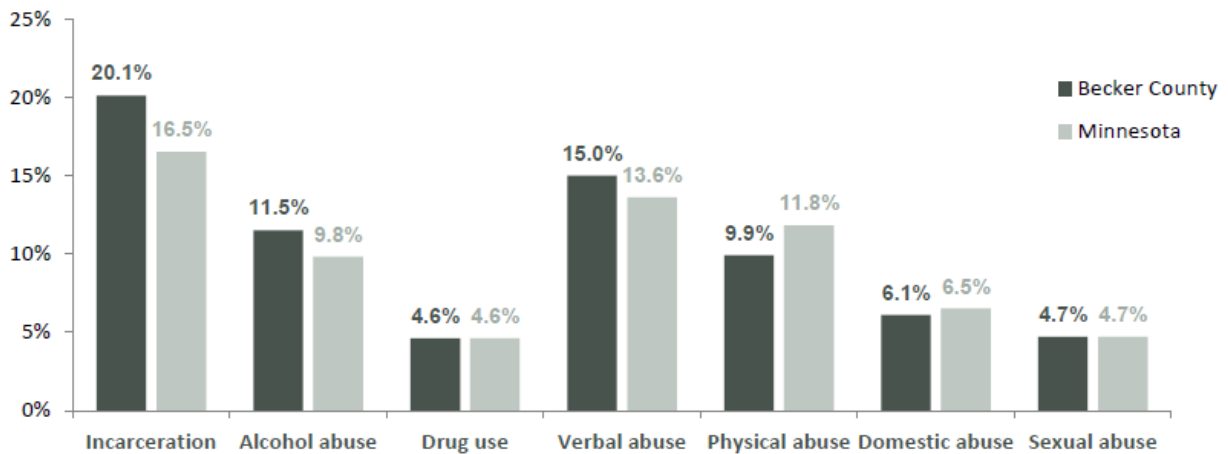
“ Adverse childhood experiences are the single greatest unaddressed public health threat facing our nation today ”

Dr. Robert Block, the former President of the American Academy of Pediatrics

67% of the population have at least 1 ACE



Adverse Childhood Experiences, 8th, 9th, and 11th Graders, 2016 MSS



4th Annual Community Health and Wellness Summit

**Building a Healthy
and Resilient
Community**

Dinner will be provided!

When: Tuesday, April 2nd

From: 4:00-8:00pm

Where: Holmes Theater

Detroit Lakes, MN 56501

**WHO SHOULD
ATTEND?**

Community members, faith leaders, parents, government officials, grandparents, providers of services, policy makers... anyone who cares about building resilient communities, where kids and adults can thrive are all encouraged to attend

WHAT WILL HAPPEN?

We will engage in community discussion and planning for 2019-2021!

Objectives include:

1. Understand how Adverse Childhood Experiences influence our health, wellbeing, economy and future
2. Know our local data- what does ACES look like in Becker County (schools, public, by race and/or ethnicity)
3. Develop a plan (you will help with ideas) to Build a Healthy and Resilient Community
4. Networking- who do you know, what resources do we have available, and how can we connect on a more meaningful level

Lead Presenter Becky Dale from Minnesota Communities Caring for Children and will discuss NEAR Science, Adverse Childhood Experiences and resiliency.

Becker County
energize

Questions? Contact Karen Pifher @ Karen.Pifher@EssentiaHealth.org